

# THE DHAMI

*a stunning 3 bedroomed home*

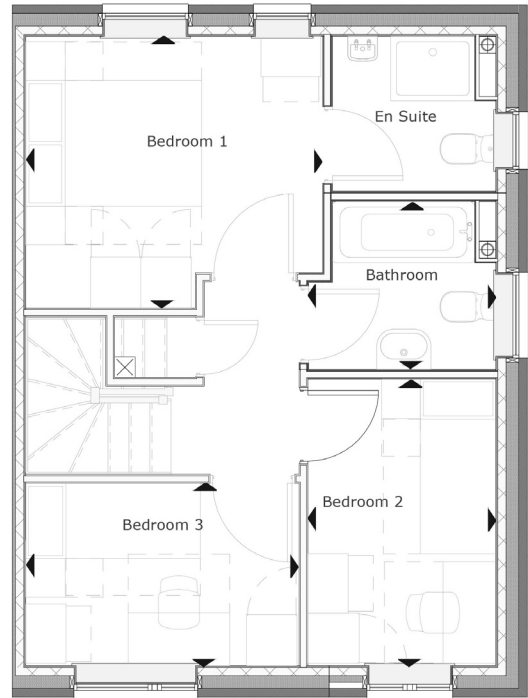
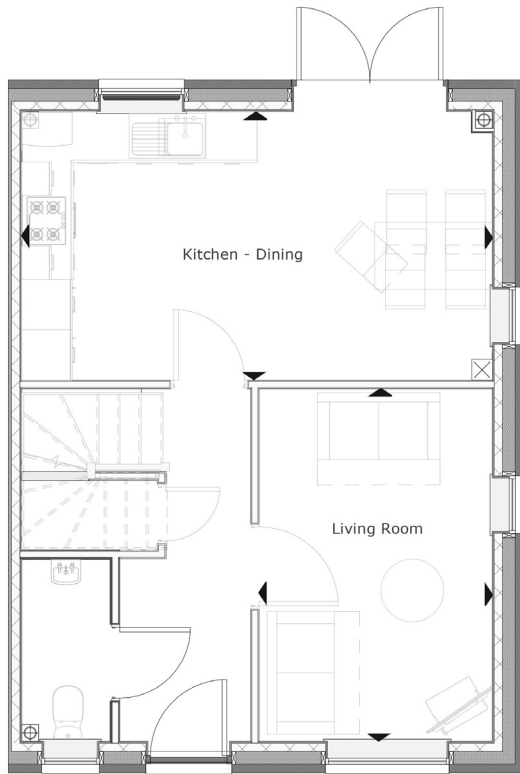


**The Dhami** is a stunning three-bedroom home. Along with parking provision, this property has a hallway with access to the ground floor WC. A separate living room and open plan kitchen/diner with access to the rear garden.

The first floor consists of three bedrooms including the master bedroom with ensuite and a family bathroom.

# THE DHAMI

## 3 BEDROOM HOUSE



### Ground Floor

#### Room dimensions

Living	2.79m x 4.20m 9'2" x 13'9"
Kitchen/Dining	5.59m x 3.20m 18'4" x 10'6"

### First Floor

#### Room dimensions

Bedroom 1	3.56m x 3.24m 11'8" x 10'7"
Bedroom 2	2.25m x 3.42m 7'4" x 11'2"
Bedroom 3	3.29m x 2.17m 10'9" x 7'1"

*Specifications: This information is for guidance only and does not form any part of a contract or constitute a warranty.*

*Illustrations are of typical elevations and may vary. Floor plan are not drawn to scale.*

*Room dimensions are subject to a +/- 50mm(2") tolerance and are based on a maximum dimensions in a each room.*

*Please consult your sales advisor on site for specific elevations, room dimensions and external finishes.*